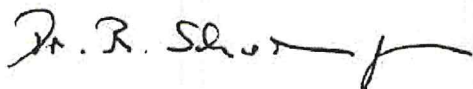


Certificate of Analysis

Product Name: Bis(2-ethylhexyl) phthalate
PESTANAL™, analytical standard
Product Number: 36735
Batch Number: BCCC8985
Brand: Sigma-Aldrich
CAS Number: 117-81-7
Formula: C₂₄H₃₈O₄
Formula Weight: 390.56
Expiration Date: JAN 2025
Quality Release Date: 24 FEB 2020

TEST	SPECIFICATION	RESULT
APPEARANCE (COLOR)	COLORLESS TO LIGHT YELLOW	COLORLESS
APPEARANCE (FORM)	LIQUID	LIQUID
PURITY (GC AREA %)	≥ 98.0 %	99.7 %
REFRACTIVE INDEX N20/D	1.4846 - 1.4886	1.4850
PROTON NMR SPECTRUM	CONFORMS TO STRUCTURE	CONFORMS



Dr. Reinhold Schwenninger
Quality Assurance
Buchs, Switzerland

Sigma-Aldrich warrants that at the time of the quality release or subsequent retest date this product conformed to the information contained in this publication. The current specification sheet may be available at Sigma-Aldrich.com. For further inquiries, please contact Technical Service. Purchaser must determine the suitability of the product for its particular use. See reverse side of invoice or packing slip for additional terms and conditions of sale.

Certificate of Analysis

Shimadzu GC-2010 Plus	
Injector :	250 °C
Detector (FID):	320 °C
Carriergas:	Helium
Velocity:	40.0 cm/s
Temp. Control:	see Figure 1
Split Ratio:	100:1
Range:	-
Injection Volume:	1.0 ul
Vial Number:	Tray1:14
Run Time:	20.00 min
Column:	Equity-5, 30 m x 0.25 mm, 1.0 um
Sample Prep.:	ca. 20 mg in 1.5 ml dichloromethane

GC Serial Number: C11805270206 US
Injection Time: 20.02.20 02:40
Sample Type: Unknown
Channel: GC_1
Sequence Creation Time: 03.01.20 13:32
Sequence Created By: Dosch Nicolas
Time Processed: 01/Mar/2020 18:20
Processed By: Berthet Mikael

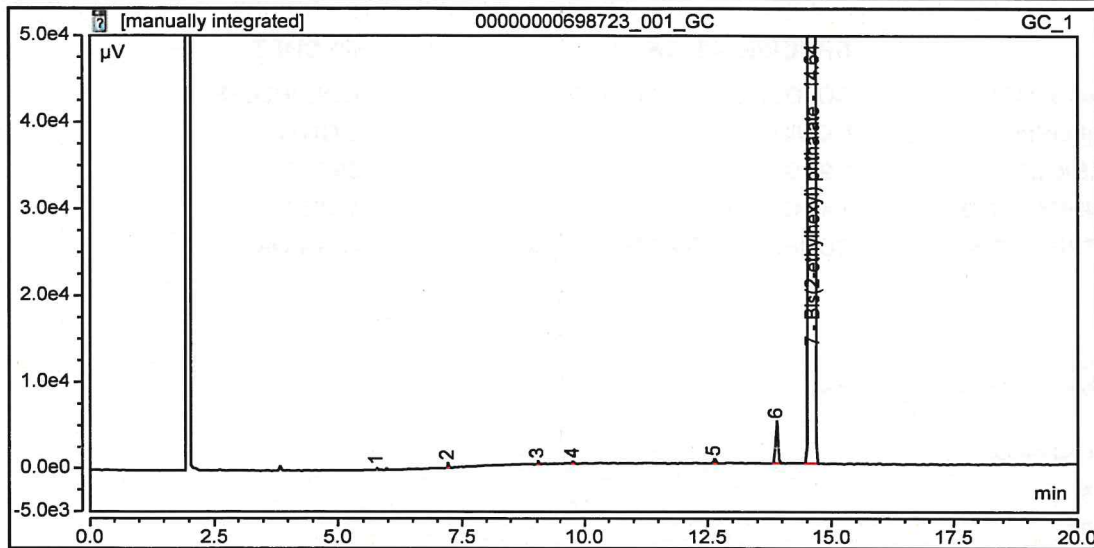


Figure 1: Zoomed Chromatogram and Temperatur Program

No.	Ret.Time min	Peak Name	Type	Height µV	Area µV*min	Amount	Rel.Area %
1	5.778		BMB*	242	3.5492	n.a.	0.004
2	7.215		BMB*	542	10.2708	n.a.	0.011
3	9.025		BMB*	358	9.8750	n.a.	0.011
4	9.762		BMB*	308	7.7393	n.a.	0.008
5	12.635		BMB*	518	22.8563	n.a.	0.025
6	13.890		BMB*	4938	259.4570	n.a.	0.278
7	14.637	Bis(2-ethylhexyl) phth	BMB*	1391229	92867.3190	n.a.	99.663
Total:				1398135	93181.0667		100.000